

4000A BREAKER ENCLOSURE

SOLUTIONS | 50029



SPECIFICATIONS

- 2000 H x 1200 W x 1000 D
- 1200 LBS
- Manually Charged, Closed & Tripped.
- Shunt Trip (24VDC) with Remote Tripping Breaker.
- RAL-7035 Gray Paint
- LSIG Trip Units
- (3) 4000:5 Current Transformers
- NEMA 12 Gauge Metal

BREAKER ENCLOSURE

Circuit breaker enclosure supplied with top and bottom copper bus runbacks, risers, and main bus connection for the top runback with full load neutral. Additional spacing between main bus phases to provide increased workable space. Each main bus phase contains a minimum of (20) 2 hole patterns. The main bus also contains a center glastic bracing. (3) 4000:5 Current transformers installed with secondary wiring to 4 pole shorting terminal board installed on the bottom bus runbacks.

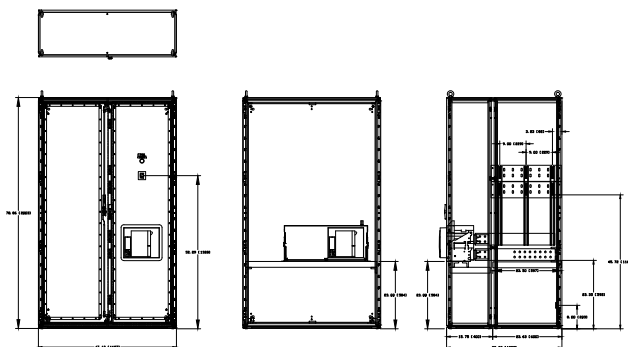
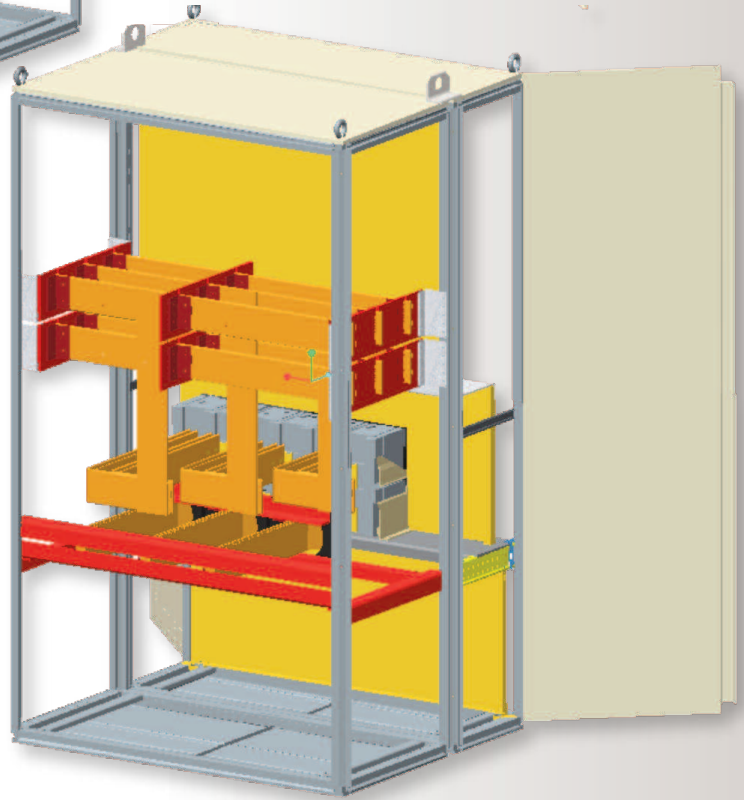
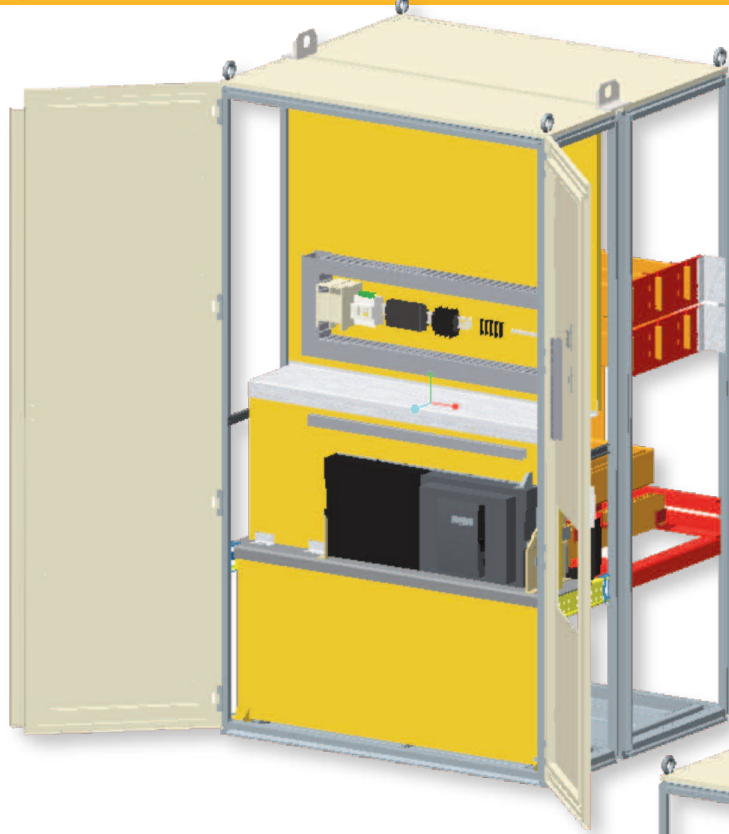
4000A circuit breaker with 'T' stabs. Breaker is equipped with LSIG trip units and set to a minimum tolerance for testing.



4000A

BREAKER ENCLOSURE

SOLUTIONS | 50029



ENERCON *INTEGRATED ENERGY SOLUTIONS*
201 ALTORFER LANE, EAST PEORIA, ILLINOIS 61611
309.694.1418 | enercon-eng.com