

POWER UPGRADE

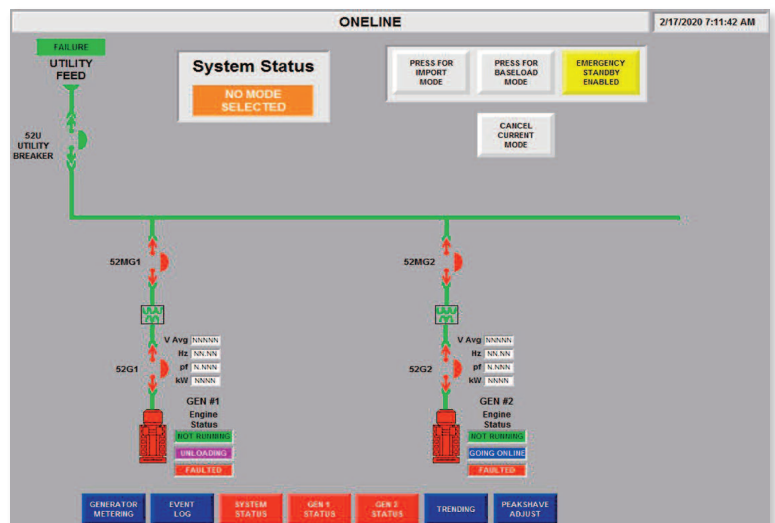
UTILITY SUBSTATION



Control components removed from the existing switchgear & modified.

SPECIFICATIONS

- Switchgear and engine controls upgrade in (2) existing power modules leaving the existing switchgear breakers and power envelope
- Testing and recertification of existing breakers
- New master control panel and master PLC with integrated SCADA communications - Modbus TCP/IP
- Manual and Automatic Utility paralleling with Baseload, Import/Export and Standby Island Mode
- Utility grade protective relaying and generator protection
- Generator metering, alarm history and trending
- Factory acceptance testing prior to site installation



ENERCON INTEGRATED ENERGY SOLUTIONS

201 ALTORFER LANE, EAST PEORIA, ILLINOIS 61611
309.694.1418 | enercon-eng.com